

# Using the Roland Color Library with Adobe Illustrator

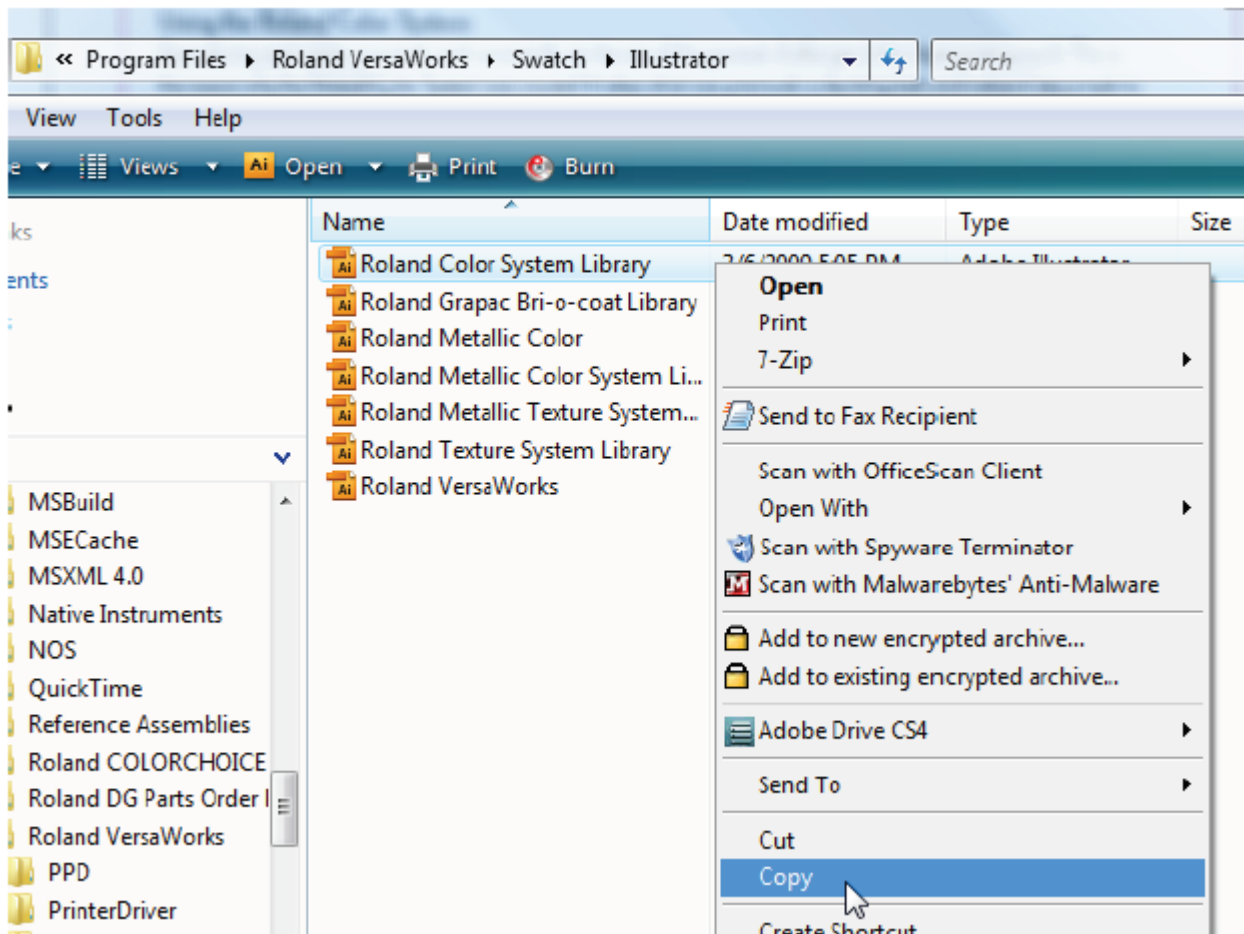
## Using the Roland Color System

Reproducing spot colors accurately and consistently can be one of the greatest challenges in the inkjet printing world. This is the reason why the Roland Color System was created. It takes what was previously a daunting task and makes it very simple to understand and carry out.

The Roland Color System is a swatch palette that can be installed in Adobe Illustrator and Corel Draw for ease of use when creating artwork. Flexi Sign 8 and versions above that also have Roland Color Swatches available in the software. Once the palette is installed and colors are selected from the palette are used in the artwork Versaworks will recognize the color value and reproduce the correct color every time without failure.

## Installing the palette in Illustrator

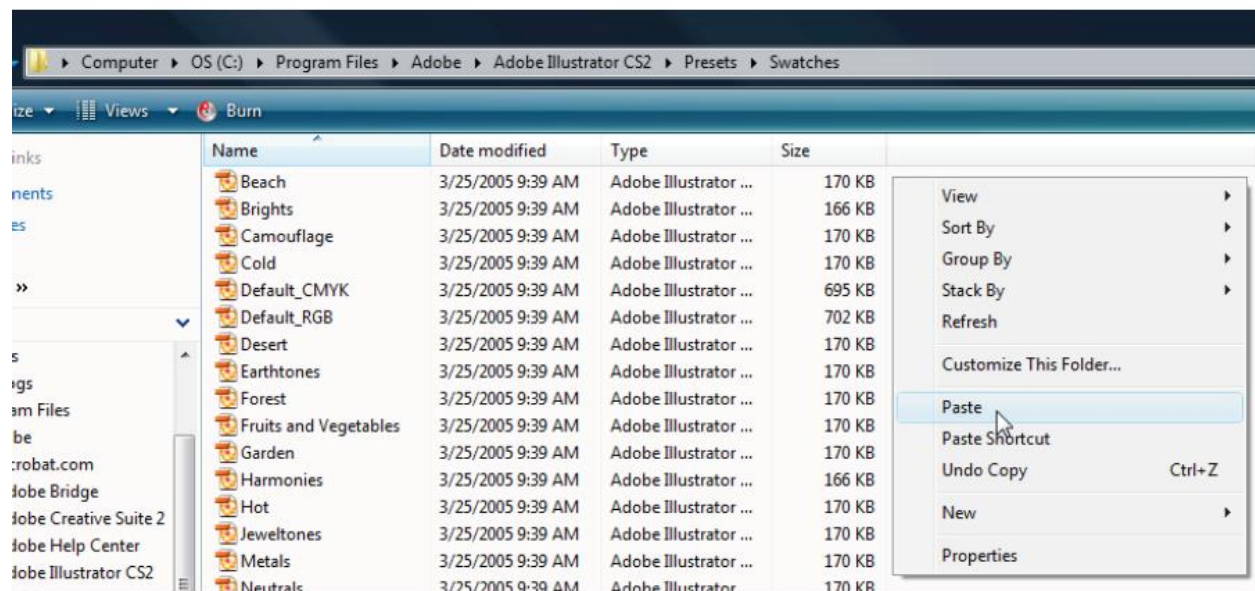
The first step in using the Roland Color System is the installation of the swatch palette in Illustrator for use. Before starting this process close both Adobe Illustrator and Versaworks.



A. Browse to **C Drive, Program Files** folder and **Roland Versaworks** folder. **Swatch** folder and the **Illustrator** folder.

B. **Right Click** on the **Roland Color System Library** file and select **Copy**.

**Tech Tip:** If the If the cut contour line has not been set up in Illustrator select both the **Roland Color System Library** and the **Roland Versaworks** swatch palettes and copy them both at this time. This will save time since the process for installing both palettes is the same.

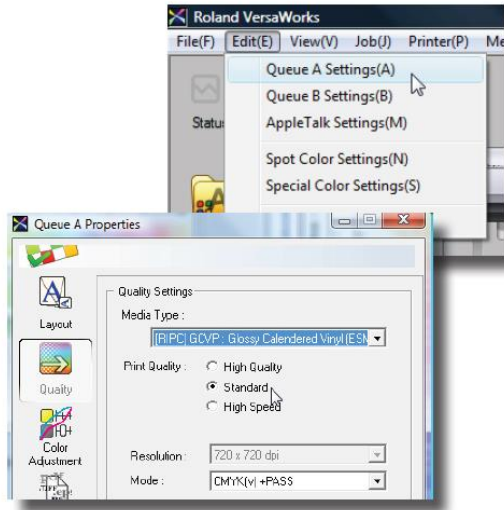


C. Browse to **C Drive, Program Files** folder and **Adobe** folder, **Adobe Illustrator** Folder, **Presets** folder and the **Swatches** folder.

D. **Right click** the margin area and select **Paste**. The swatch palette is now installed and ready to use.

## Printing the Roland Color Swatches

Now that the swatches have been installed the next step is to print the swatch chart. This will provide the baseline for what each color value is going to output. Load and set up media in the printer to begin.



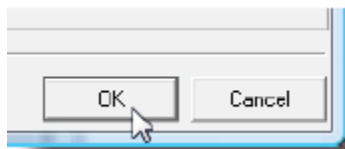
A. Open Versaworks and select **Edit, Queue A Settings**.

B. Under the **Quality** tab select the proper **Media Type** being used.

C. Once the Media Type has been selected the Print Mode for out putting the swatch chart.

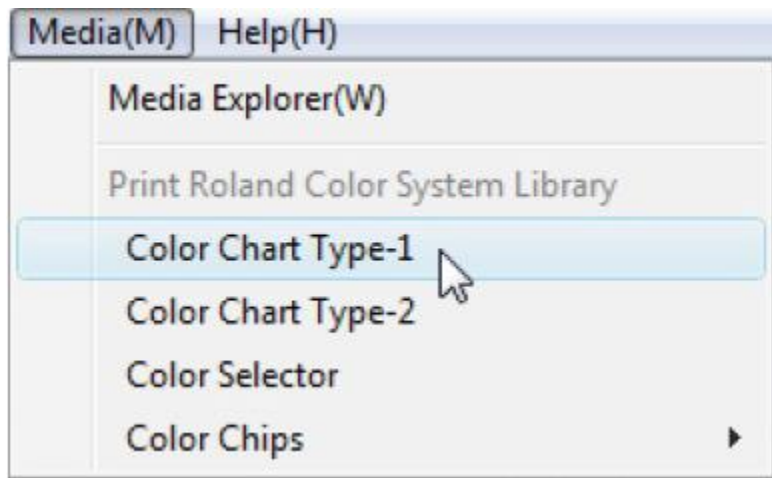
**Tech Tip:** Due to varied white points of media and different ink saturations per **Media Type and Print Mode** be sure to print the swatch chart on the same settings as desired output. Individual swatch charts should be printed for each **Media Type and Print Mode** to ensure correct results for each media.

D. Once the **Media Type and Print Mode** have been selected press **OK** to save these settings.

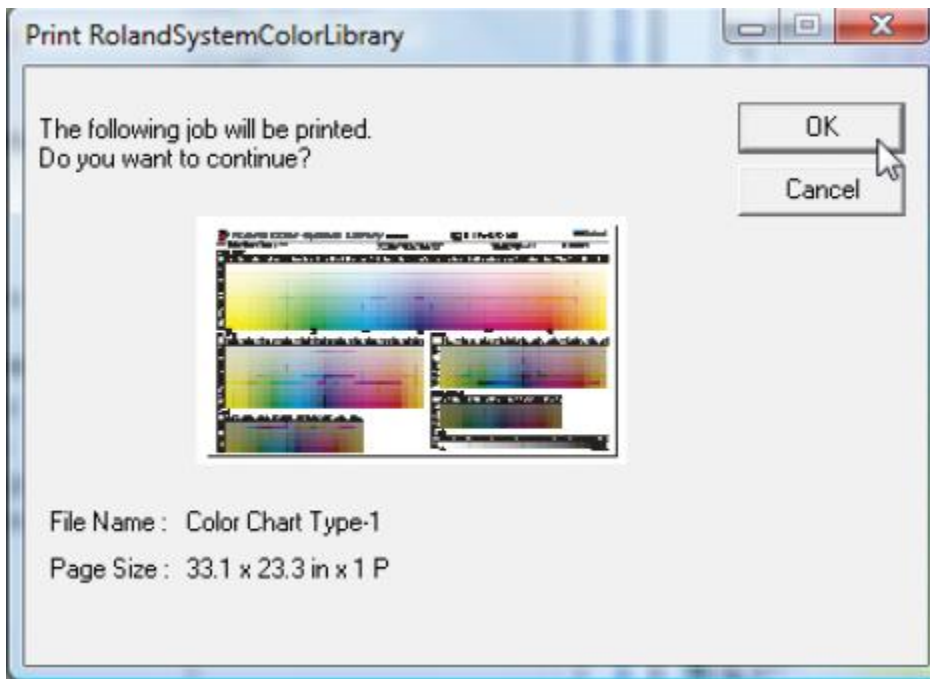


**Note:** This process has set the default settings for jobs loaded into the **A Queue**. This means any job loaded into the A Queue will automatically have the **Media Type and Print Mode** (along with any other settings changed in the **Queue A Properties**) selected applied. These settings can still be changed if desired as this is the way to quickly set up jobs for commonly used media.

E. On the menu bar at the top of the Versaworks screen select **Media and Color Chart Type-1**. We have selected Type 1 for training purposes but all color charts available show the same **Roland Colors**.



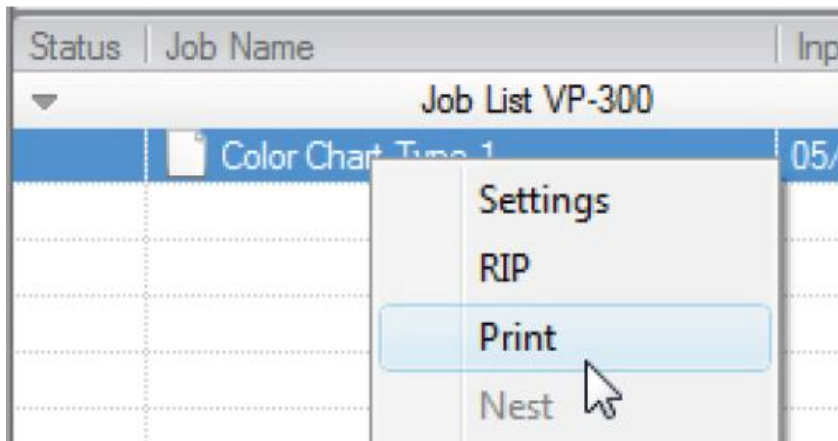
F. The window on the left will be displayed. Press **OK** and the color chart will move into **Queue A** for sizing and output.



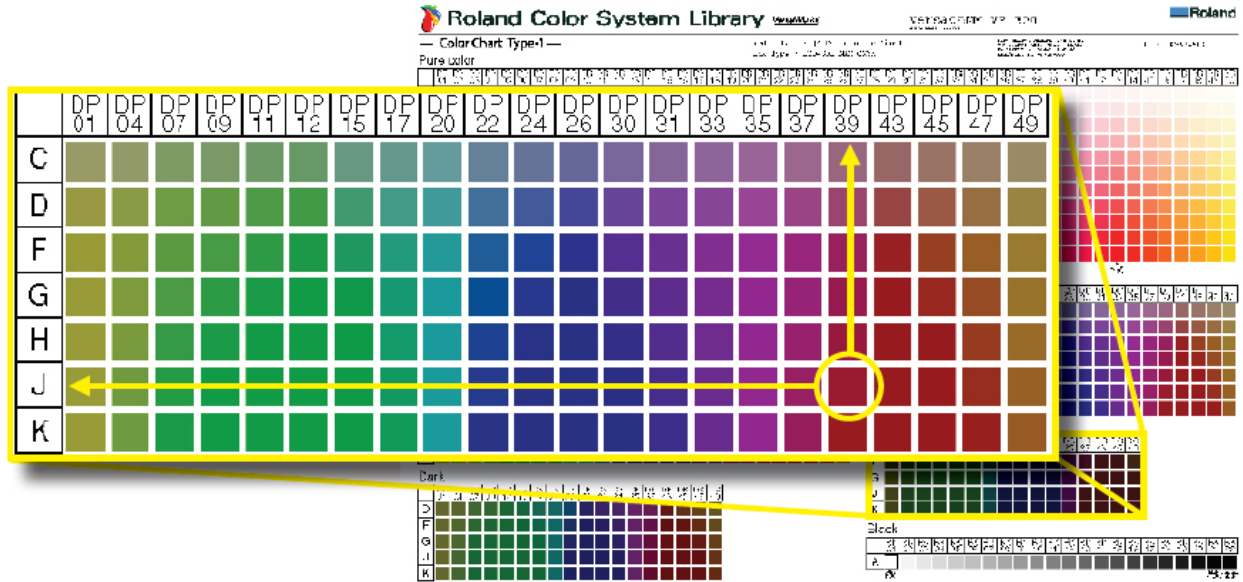
G. Double click on **Color Chart Type 1 in Queue A** to adjust the size and layout of the chart. When complete press OK to save changes.

**Note:** Be sure to print the chart at a size large enough to get an accurate representation of the colors.

H. **Right Click** on **Color Chart Type 1** and select **Print** to output the color chart.



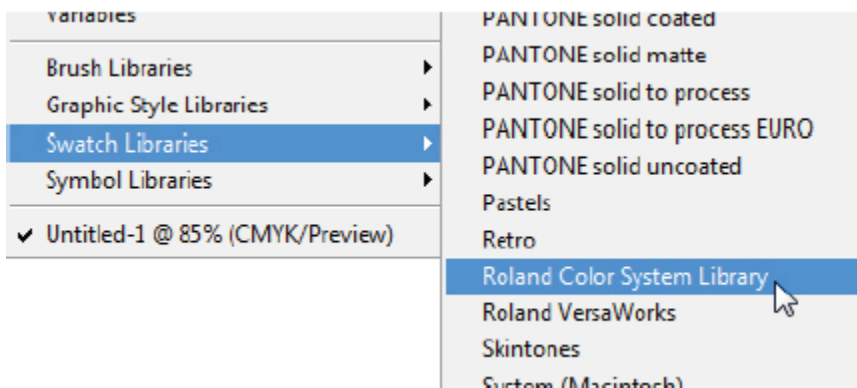
## Redaing the Roland Color Chart



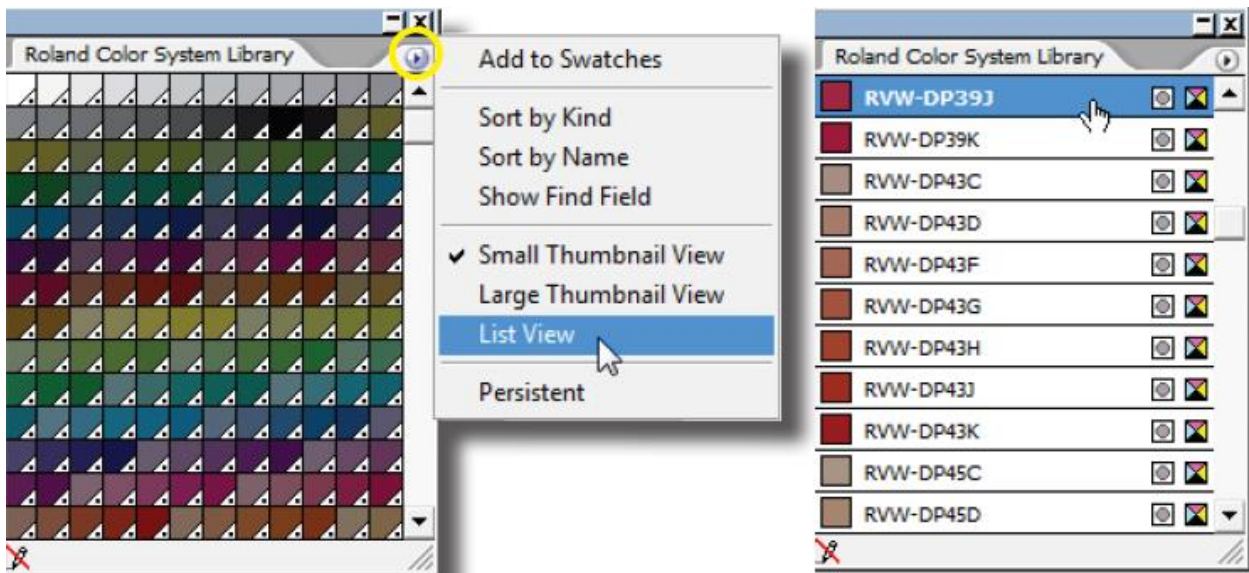
Now that the color chart has been printed it is time to put it to use. In the graphic color **DP39J** has been selected for testing purposes. The color number comes from the **Column** the color is located in combined with the letter of the **Row** the color is in. The color is the same no matter which Roland Color swatch selected.

## Using the Roland Color Swatches in Illustrator

A. With a vector based graphic go to **Window – Swatch Libraries** and select **Roland Color System Library**.

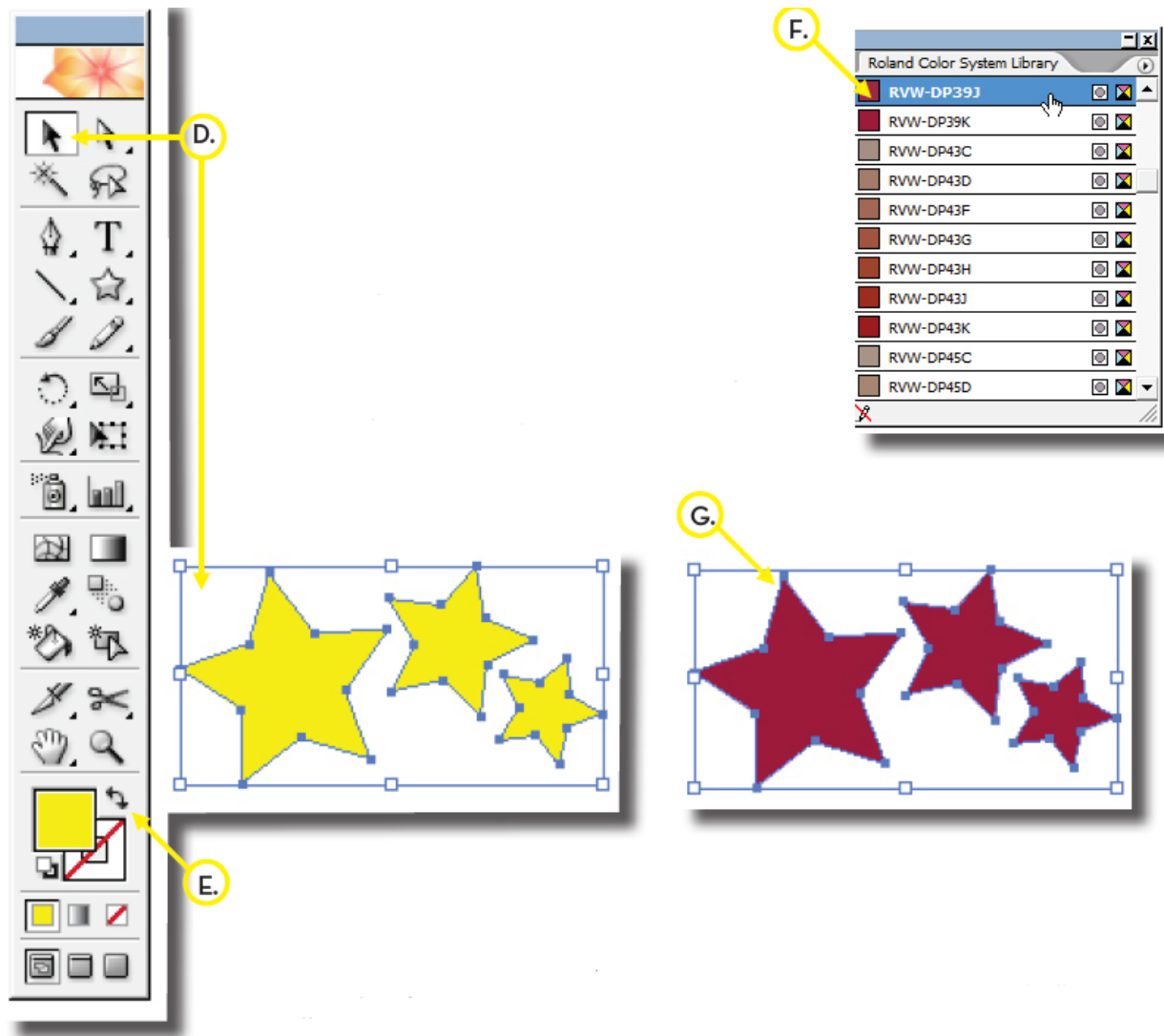


B. Click on the arrow on the top right corner of the window and select **List View**.



C. Once **List View** is selected the swatch palette will appear as shown above.

## Using the roland Color System



**D.** Use the **Black Selection Arrow** to highlight parts of the graphic that will have the Roland Color System applied.

**E.** Make sure the **Fill Color** is in front of the **Stroke Color** in the **Illustrator Tool Bar**.

**F.** Find the swatch color **DP39J** in the **Roland Color System Library** and single click it with the mouse.

**G.** The items selected are now the **Roland Swatch Color DP39J** and should have changed from their original color to the selected spot color.

**H.** Save the file as an Illustrator EPS or PDF file.

**Note:** Any items that have transparencies will be flattened when saving out of Illustrator and once flattened the **Roland Color Library** can not be read properly by Versaworks.

## Outputting A Roland Color System

A. Import the file in **Queue A**.

B. Double click on the file to open the **Job Settings** window.

C. Select the **Quality** tab and select the same **Media Type and Print Quality** that the original Roland Color Chart was printed.

D. Select the **File Format** tab and be sure that **Convert Spot Colors** is checked and that the **Color Name and Output Color** are showing in the window.

**Note:** If the color does not show up in the window below it was not detected by Versaworks. If this occurs the problem is usually in how the file was exported from Illustrator. Make sure there is no transparency on the graphic and that the file type is EPS or PDF.

E. Select **OK** to save the settings.

F. **Right Click** on the file name in **Queue A** and select **Print**.

**Note:** If the color printed in the graphic does not match the color chart that was previously printed make sure that step C. in this process is correct and that the color number correctly matches your chart.

